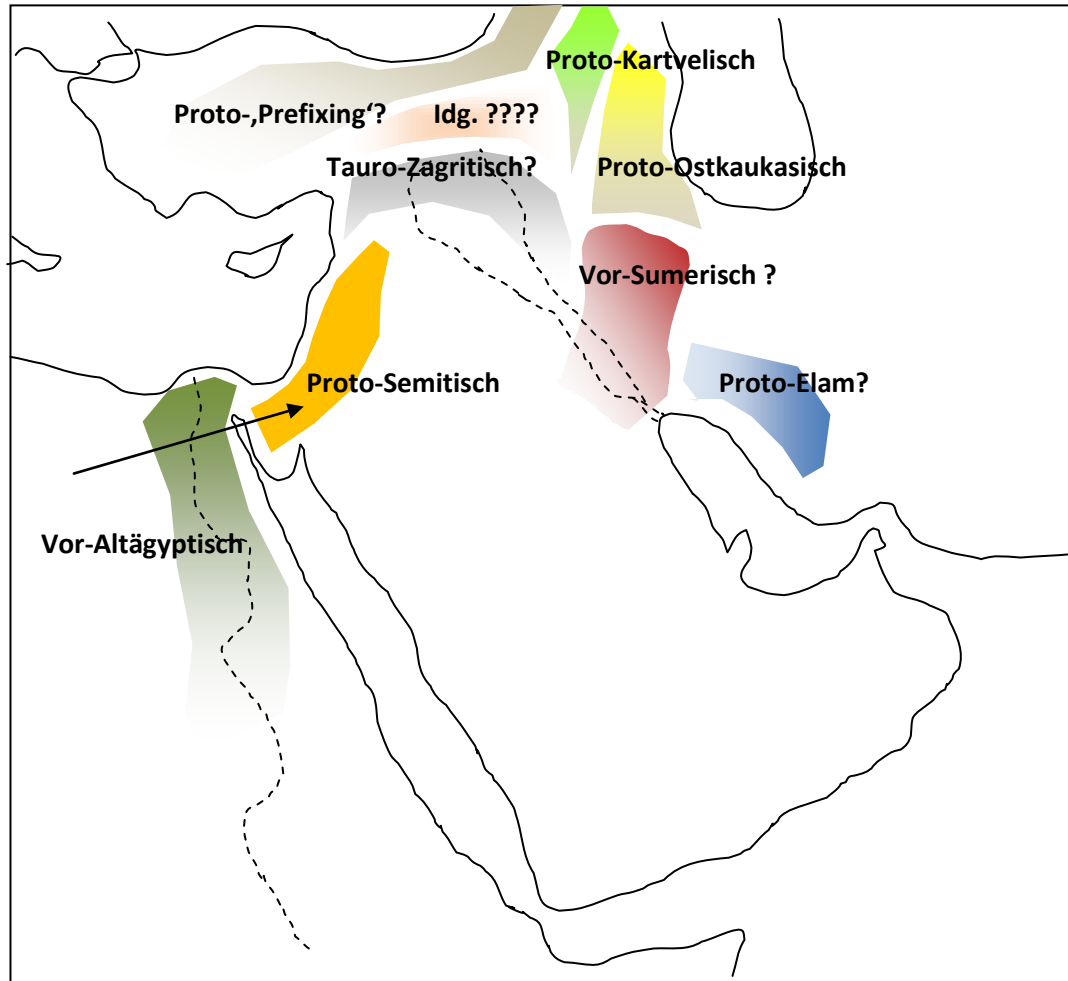


Mögliche Wege der Ausbreitung der altsemitischen Sprachen

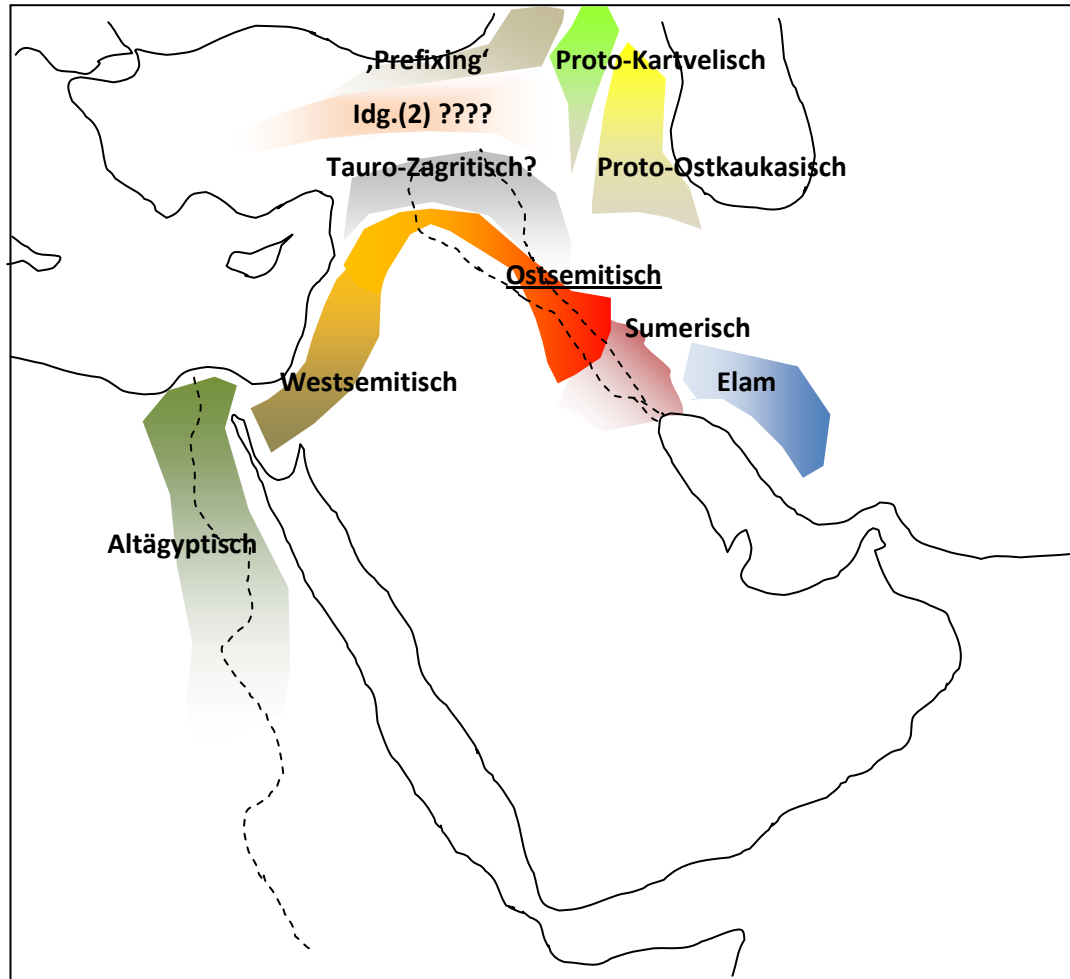
(© Wolfgang Schulze 2008)

Karten 1-8: Ausbreitung; 9: Stammbaum; 10: Schriftenkreise

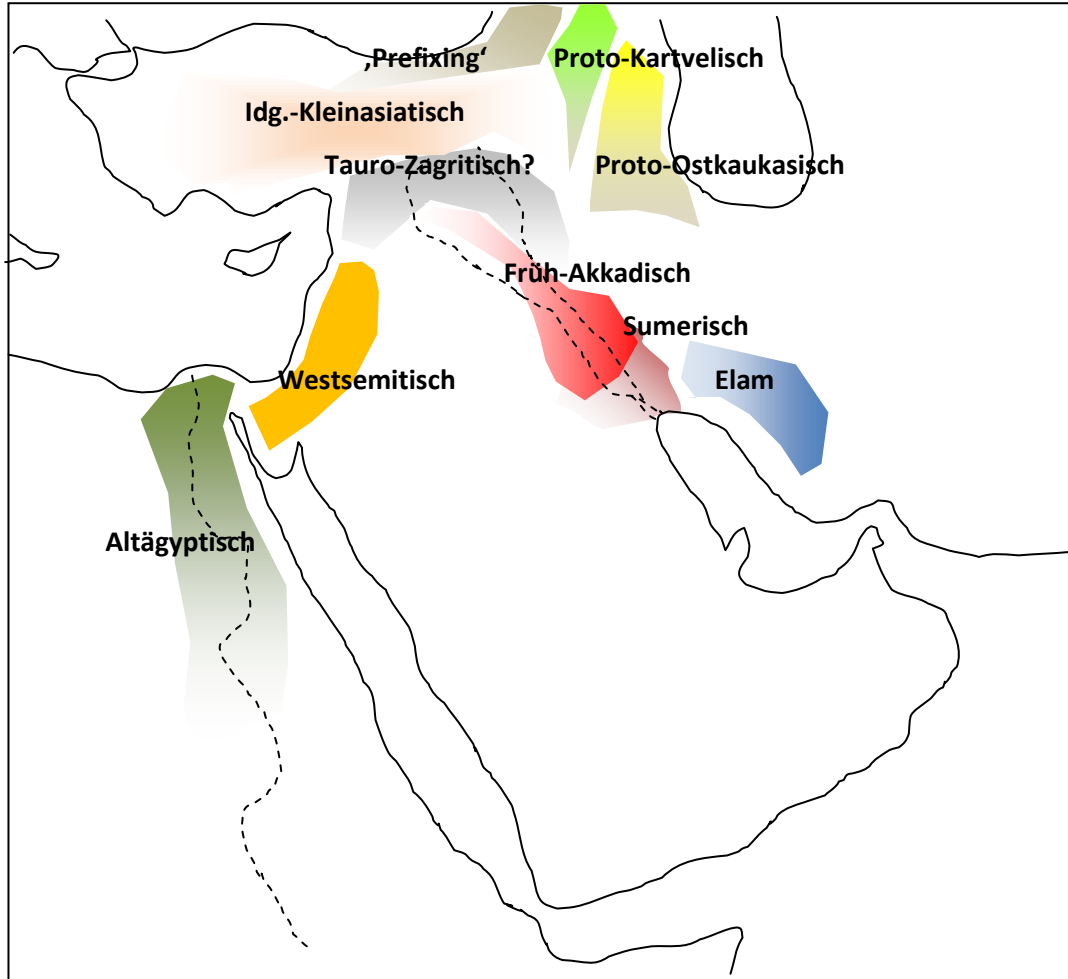
1. Urheimat (5.000 - 3.500 BC ?)



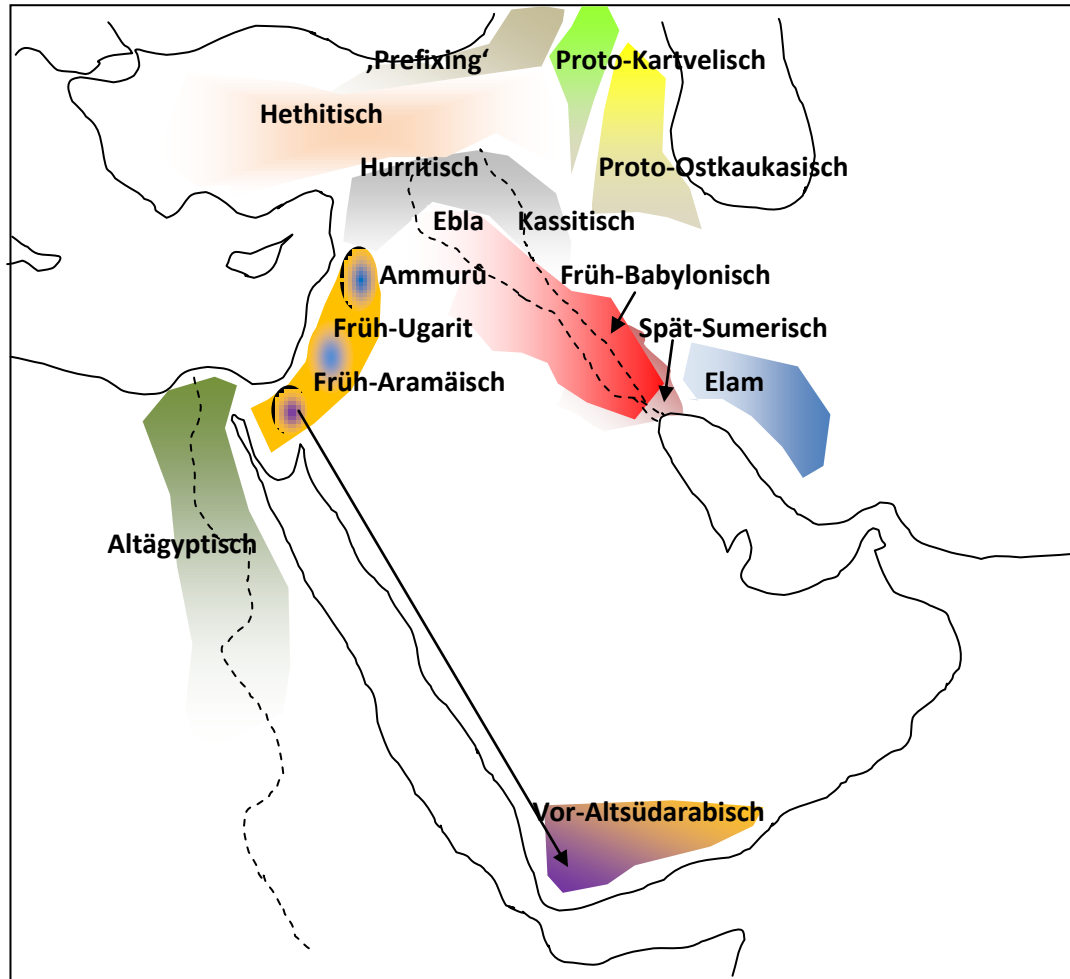
2. Die Ausprägung des Ostsemitischen (3.500 - 3.000 BC ?)



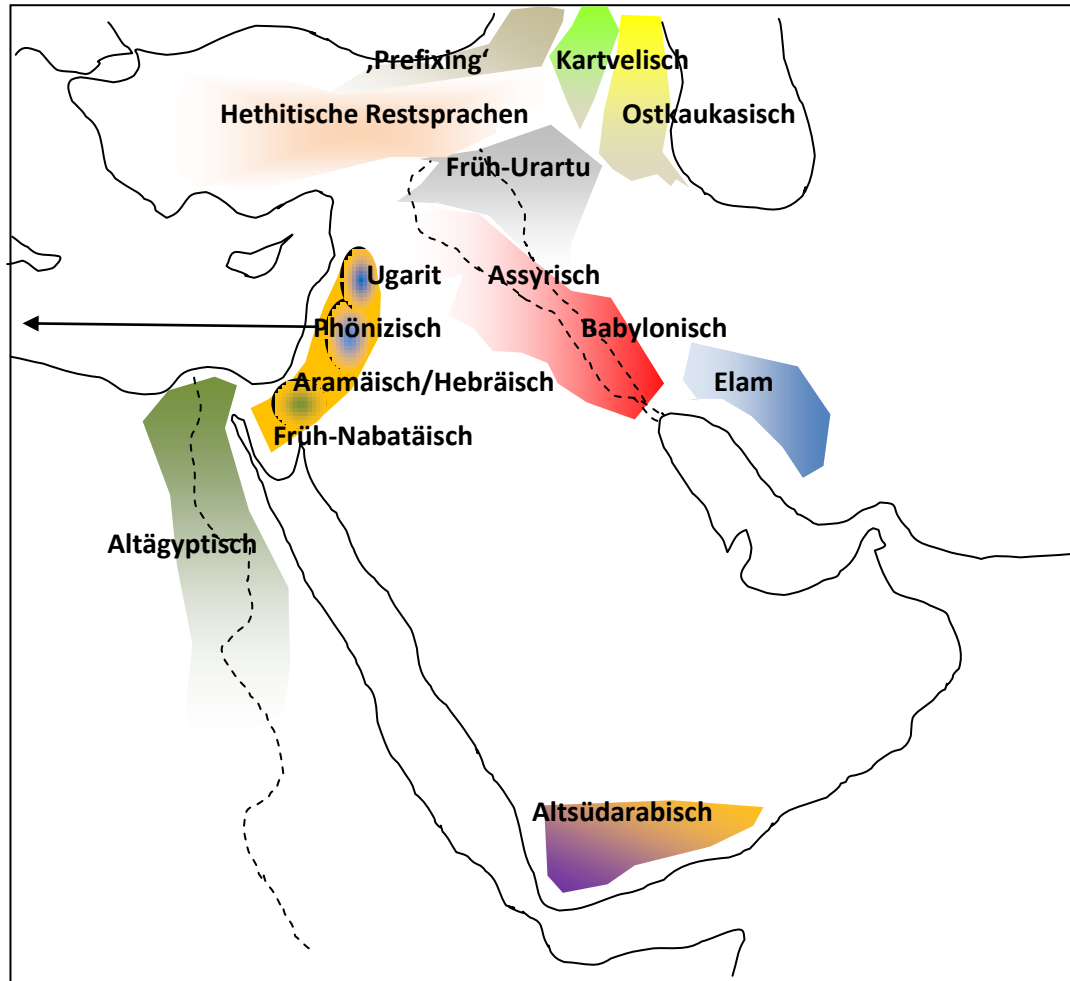
3. Semitisch um 3.000 BC



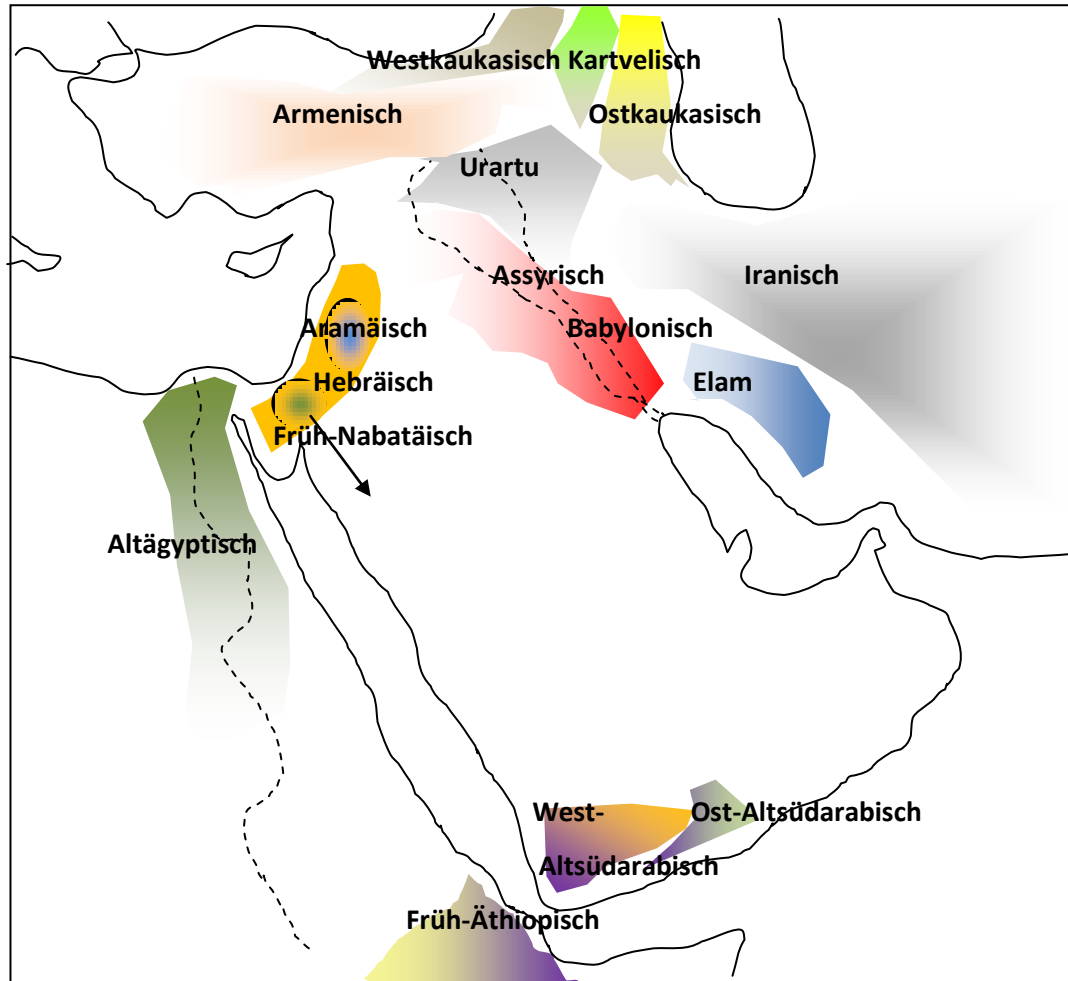
4. Semitisch um 2.000 - 1.500 BC



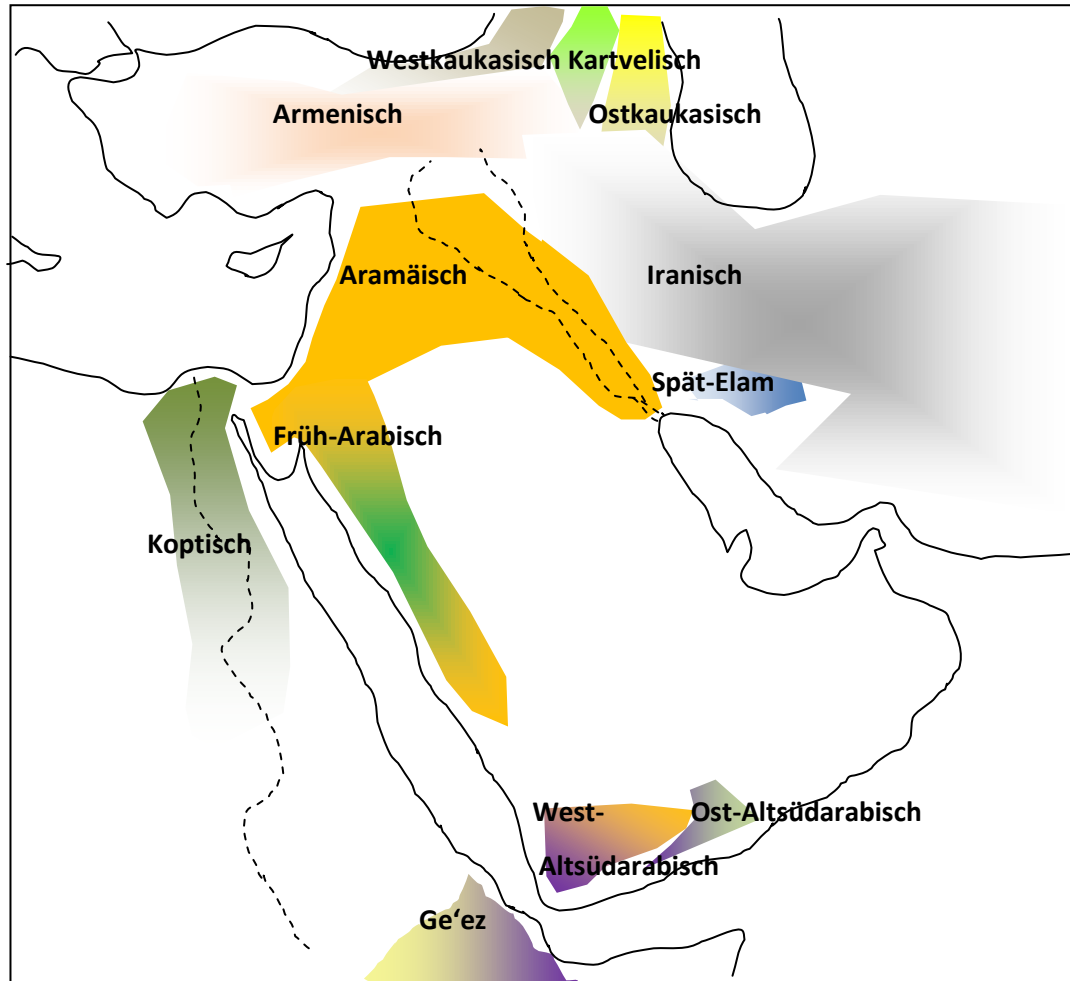
5. Semitisch um 1.000 BC



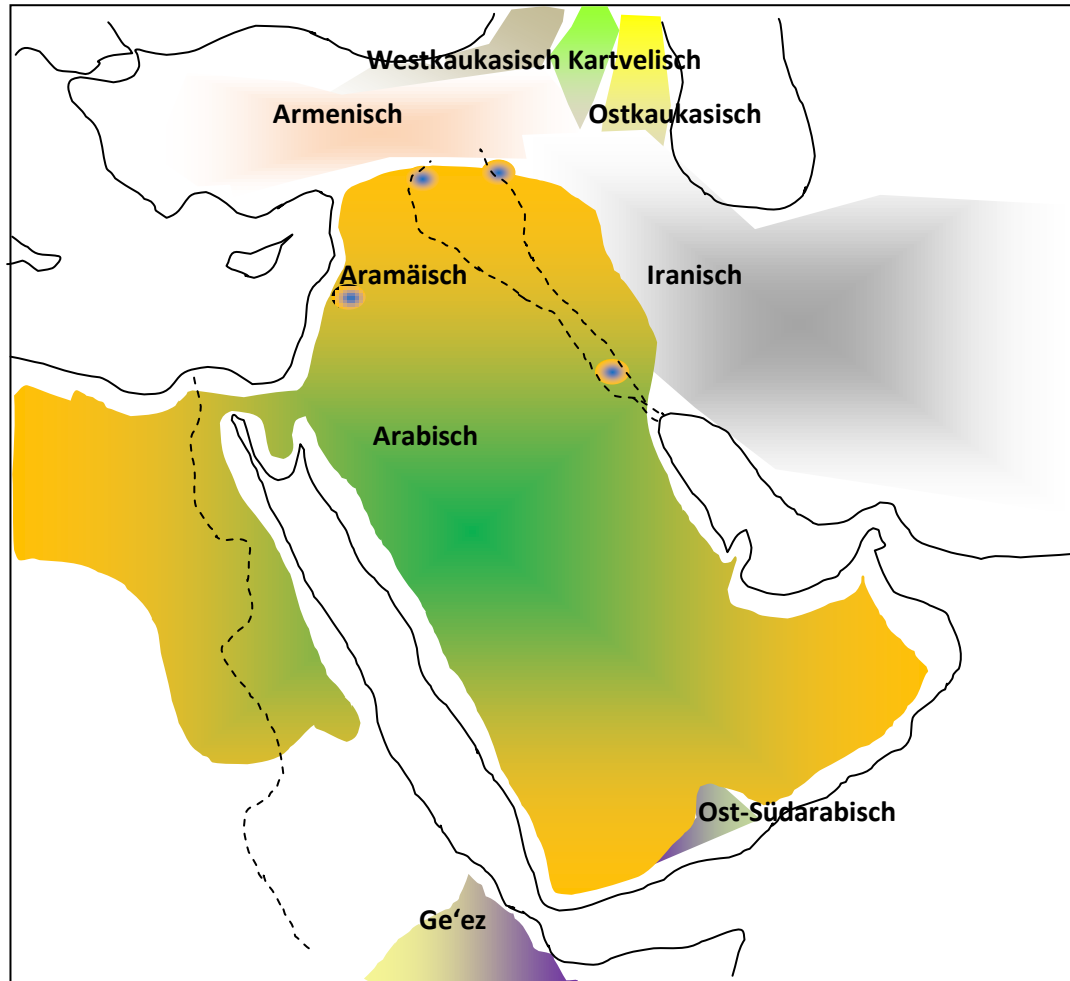
6. Semitisch um 500 BC



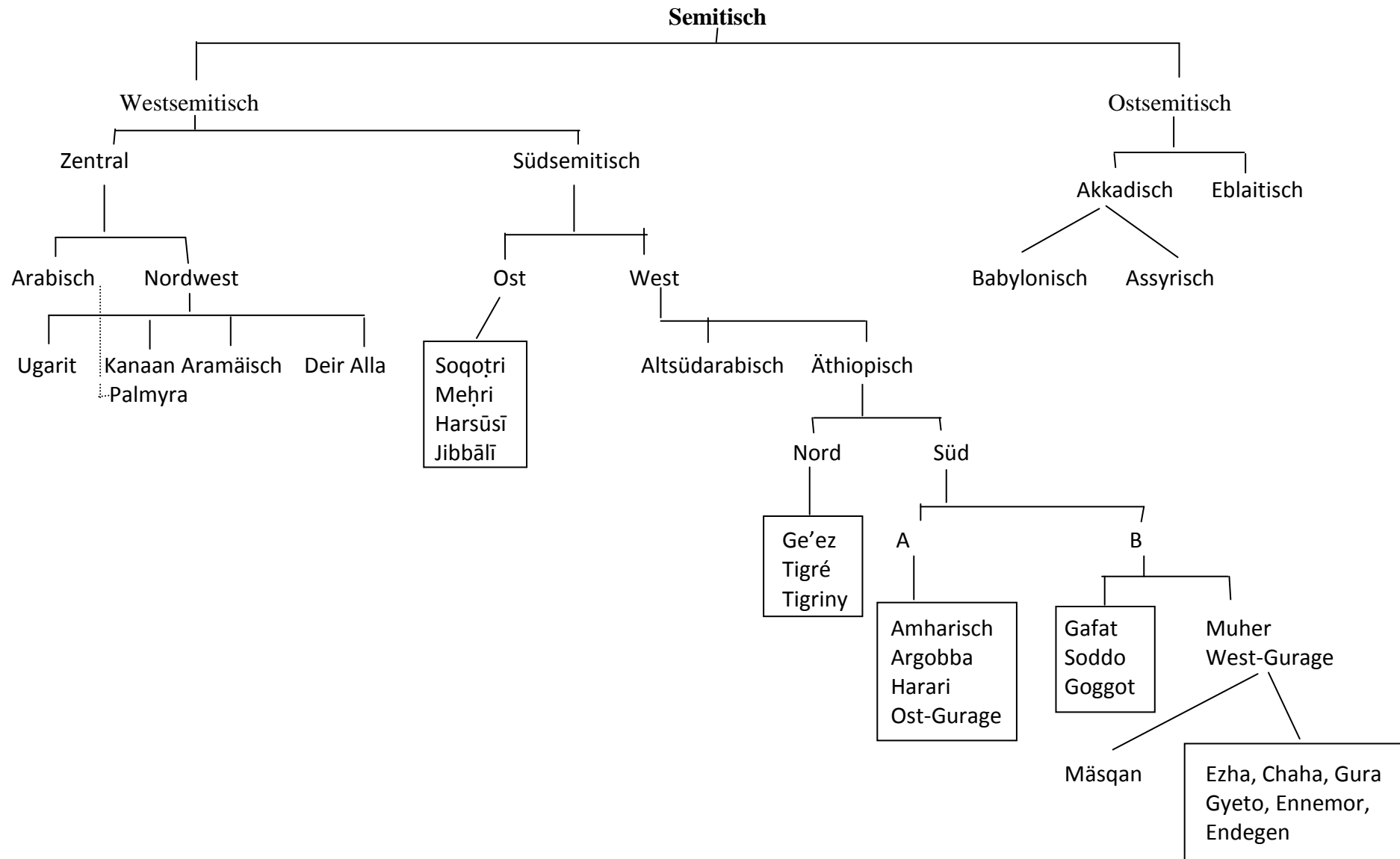
7. Semitisch um 200 AD



8. Semitisch um 800 AD



9. STAMMBAUM (nach Hetzron 1997:6 in Adaption W.S.)



10. Schriftlichkeit (grob schematisch) [ohne ägäischen Raum]

